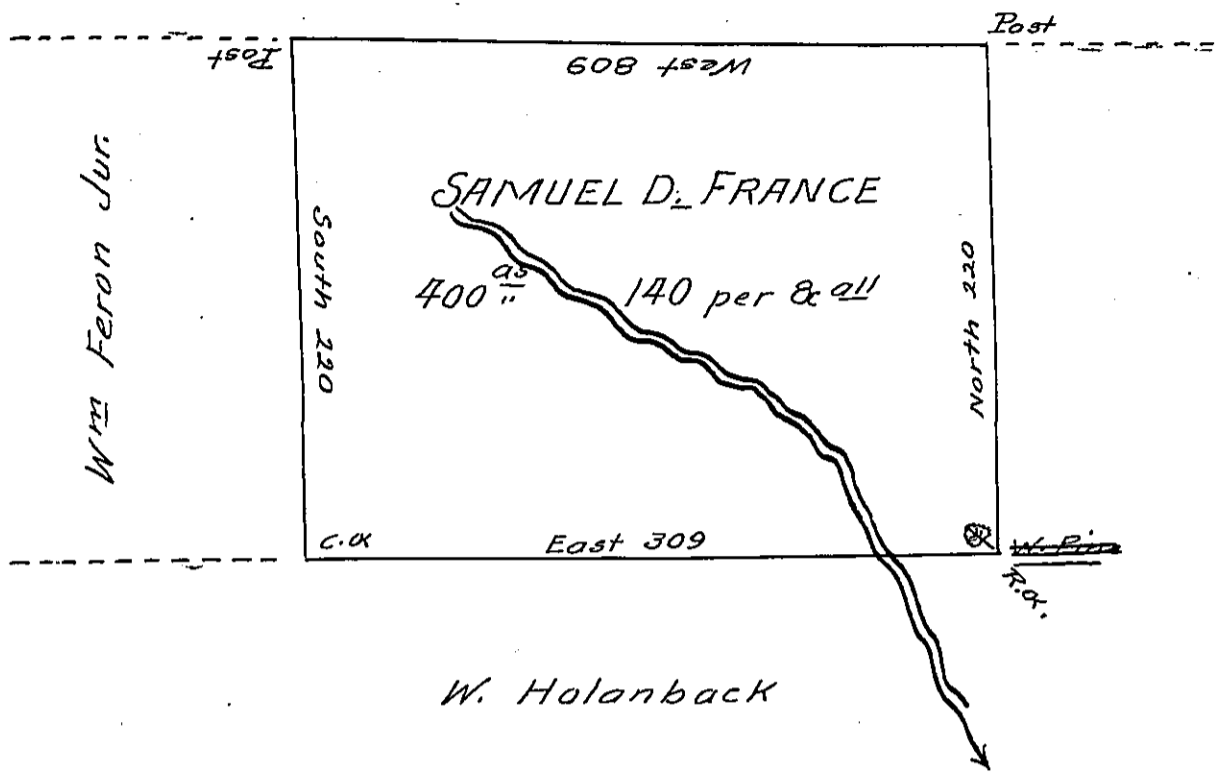


Surveyed Lands



Situated in Chapman Township Clinton County Surveyed the 3. day  
of July 1859 to Samuel D. France. By virtue of his Warrant for —  
400<sup>as</sup> Bearing date the 29. of June 1859. Containing 400<sup>as</sup> 140 per.  
and all. of six per cent for Roads &c.

Wm. P. Baird Co. Sur.

To John Rowe Esq.  
Sur. Gen. of Penna.

IN TESTIMONY that the above is a copy of the original remaining on file in  
the Department of Internal Affairs of Pennsylvania, made  
conformably to an Act of Assembly approved the 16th day of  
February, 1833, I have hereunto set my Hand and caused  
the Seal of said Department to be affixed at Harrisburg,  
this twenty-second day of June 1904

*Loac R. Pearson*  
Secretary of Internal Affairs.